

Silverado Hospice Los Angeles

# Silverado Hospice Newsletter

Author: Nancy Garcia &amp; Juliet Laschiazza

## NATIONAL SOCIAL WORK MONTH!

March is National Social Work Month, which celebrates the positive contributions of social workers around the country. Social work became a recognized profession in the United States in 1898 due to increased social issues throughout the century. Many activists dedicated themselves to solving injustices like poverty and mental illness, which helped set laws and created services for vulnerable populations.

Today, social workers are present in various settings to assist individuals and families in attaining overall well-being. Typical settings where a social worker may find employment are within hospitals, government welfare departments, mental institutions, hospices, and more. Social workers take on challenging tasks with an empathetic attitude and serve as a resource for their colleagues.

In hospice, social workers bring calmness during a critical time. They get to know the patient and the family well to advocate for them to create the individual's best care plan. They also help find resources for the patient. Social workers help the families help prepare families and patients for the hospice process and even check-in after the patient's passing.

A day in a social worker's life is never the same as the next, but it is always rewarding. Social workers at Silverado work tirelessly to ensure you and your family are comfortable. **Thank you Silverado Social Workers!**

### IN THIS ISSUE

Conversations to have with  
your hospice team - 2

Thanks to our Social  
Workers - 3,4,5

Spotlight On! - 6

### STAY CONNECTED!

(818) 848-4048

(888) 328-6622



### Visit us on the Web

[Los Angeles Hospice |](#)  
[Silverado Hospice](#)



# MORE ON SOCIAL WORK

## Myths about Social Workers

### 1. **They like to meddle in other people's lives.** ✗

Social workers are present to be an advocate for you and your family. They work in your best interest to resolve issues and enhance well-being.

### 2. **Anyone can do what social workers do.** ✗

Social workers are highly skilled professionals who hold at least a bachelor's degree in social work. A social worker in hospice has professional and emotional preparedness to provide care in the field.

### 3. **Mental health services require a psychologist.** ✗

Social workers are well equipped with mental health training and can provide these services. In rural areas, social workers are the only mental health providers.

## Fun Facts About Social Workers

- **A social worker does not have a typical 8-hour workday.**

The social worker meets with their clients, makes difficult decisions, and finds resources for them. They may need to work longer than 8 hours a day to meet the client's needs.

- **Social Worker in hospice is not always depressing.**

Death and dying are not easy topics to discuss, and many people believe hospice social work is always sad. Social workers in hospice see the good in people during a critical time and see their work affecting their clients in a positive way.

- **There are male social workers too!**

Social work is often referred to as a woman-dominated field. However, males do become social workers, and it is encouraged that more men join the profession.



**The happiest people I know are those who lose themselves in the service of others.**

**– Gordon B. Hinckley**







## *A Special Thanks to our Silverado Social Workers!*



### **Kathryn McEntire**

It's a complete honor to continue to serve each and every one of my patients. Every day is a opportunity for growth and to expand one's knowledge of grief and loss. My grandmother passed away almost two months ago, and her light continues to give me the strength to carry through and continue to share a smile with all of my patients. I am blessed to have a amazing supervisor who has been able to shape me into the most passionate Hospice Social Worker. I look forward to continue this journey.

Meet **April Boos** and allow her to be part of the next journey in your life. April has been working as a part-time social worker with Silverado for the past 6 years. April is especially passionate about providing end-of-life education and preparing families to say goodbye to their loved ones. Death and dying are difficult topics to discuss and one of the hardest parts of life. April loves connecting with her patients and families and getting to know them personally to help ease the transition from life to death. She uses strength-based approaches and explores meaning and joy sources with each patient to maximize their quality of life.

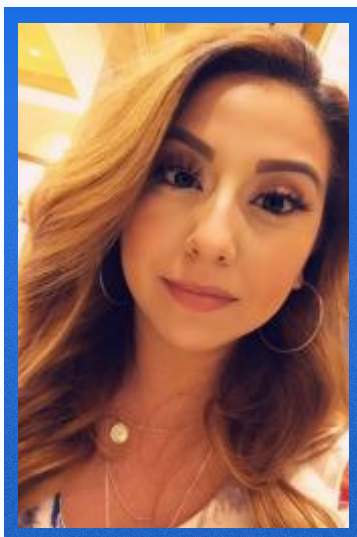


### **Stephanie Price**

I was born and raised in Los Angeles, CA (but my parents are from Belize and Barbados). I'm a social butterfly and enjoy spending time with my family, painting, watching movies, and trying new recipes. My passion for hospice came at a critical time in my life. When I was 17, my father was diagnosed with stage 4 cancer and admitted to hospice all in 8 months. During the time he was on hospice I built an amazing relationship with his hospice social worker. I always admired how attentive and supportive she was to myself and my family. Since then, I have always strived to go above and beyond to make families feel the same as she made me and my family feel; reassured and not alone.



**Zitlaly Cristerna Soto** has been a part of the Silverado team since 2016. Some of you might know her as “Laly.” She has been practicing in the field of social work for almost 10 years. Laly earned her Master’s in social work with an emphasis on Gerontology. She believes her passion for working with the elderly stemmed from volunteering in nursing homes as a teenager. Laly’s love of social work developed when she served for AmeriCorps. She is wholeheartedly dedicated to the philosophy of hospice and wishes it was incorporated in other countries. Laly dedicates her work to her late grandmother, who lived in Mexico, whom she believes would have found hospice care to be a great blessing.



**Isabel Serafin** was born and raised in Los Angeles and is a first-generation college graduate. Often facing a plethora of obstacles to reach her goals, she was determined to become a special worker. Isabel found passion in working with hospice and providing emotional support and care to patients and families. She hopes to continue to learn and grow to provide the best support to our families.

**Darice Arceneaux** I’m originally from New Orleans, LA. I obtained both BA and MSW from Grambling State University. Somehow I convinced myself to return to college and receive an MBA and Advanced Degree in Education from Central Michigan University. From the beginning of time, Social Work has been my first love. I have over 20 years of experience in so many areas: hospice, community affairs, college professor, and working with troubled youth. I have a genuine desire to help others and provide assistance to others. I recently celebrated my second year as a medical hospice social worker with Silverado. Working with my patients and families has been a rewarding experience.







**Diane Sepulveda** began her professional career working with the developmentally disabled and their families. In 2014, she earned her Master's in Social Work from the University of Southern California. She then worked under contract with Veteran Affairs West Los Angeles and served homeless Veterans and Veterans with health/mental health concerns. Diane recently joined our team and eagerly extends the same enthusiasm to working with our residents and their families.

## A Small Glimpse Of What Our Social Workers Do And How They Help Our Hospice Families

---

" The patient past away before I could arrive. But the daughter-in-law encouraged me to come as the son is having a hard time with patient's passing. I asked if they needed anything and the daughter-in-law told me that the patient's favorite ice cream was mint and chip ice cream and that it would cheer up the son. So I picked some up from the store. I sat with the son and caregiver and allowed the son to share memories and show me pictures while eating ice cream. The son was very sweet and thankful, he cried several times during my visit. I stayed with him until the mortuary picked patient up. His wife was not able to be there as she had to take care of other family issues. He said everyone from Silverado had been so wonderful and thanked the entire team. "

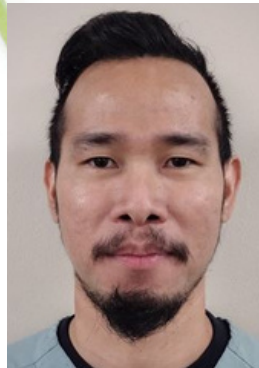
-April, MSW



Meet three of our wonderful employees  
who were recognized as employees of the  
month in March!

## Spotlight On!

### Meet Paul, LVN



"Always polite and accepting of any assignment changes. Such a team player and always has a positive attitude."

### Meet Jeanette, CHHA



"Hardworking and always willing to help. She absolutely loves her patients and it reflects in surveys and in the way her patients speak about her."

### Meet Chani, Admission Coordinator



"Works so hard and is the ultimate multi-tasker. Works so hard to support us and is cheerful and quick to respond."

Let us know how  
we're doing!

Leave us a review,  
click the icons to get  
started!

Like us on  
Facebook!

Review us  
on YELP!



Silverado Hospice  
Los Angeles

Your feedback is  
important to us. If you  
have a concern, please  
contact our Administrator,  
Richard Jenik, directly at  
(888) 328- 6622