

Employee Highlight: Get to Know Us - Silverado Nurses

Clinical Liaison

Our Clinical Liaisons are responsible for ensuring continuity of care for patients during the pre admission and admission phase. They work within facility environments, educate and communicate between team, families, and partners in the community.

Admissions Nurse (RN)

Our Admissions RN perform assessments of patient and admit the patient onto service. This typically happens where the patient lives, in private homes, or residential care homes. The Admissions nurse plays an important role educating how to best care for patient's needs and work with the family to create an individualized plan of care.

RN Case Manager

Our RNCMs work along with the core Interdisciplinary team, including Physicians, Social Workers, Spiritual Care Counselors, Certified Home Health Aides, and Volunteers. RNCMs make frequent visits, providing support and comfort according to each individualized plan of care.

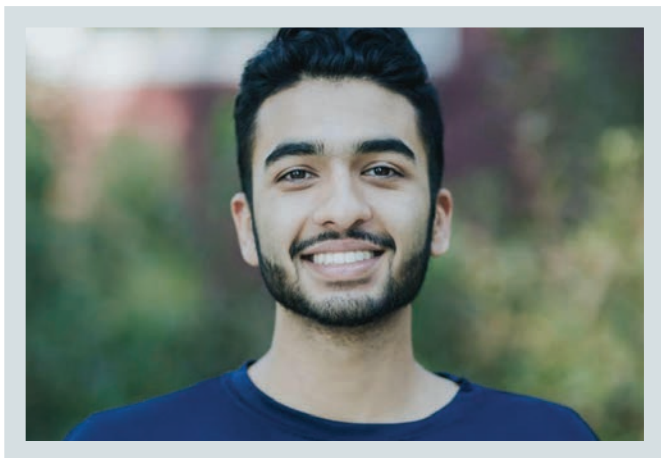
LVN & RN Runners

Our Runners conduct routine visits , in addition to responding to urgent visit requests out of hours. They monitor and report patients condition and provide guidance to patients and their support system/families.

A Great **Thank You** to our Silverado Nurses!
We Appreciate All You Do!

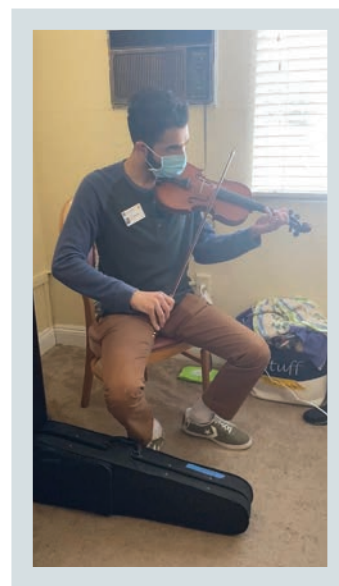
National Nurses Week | May 6-12, 2022

Volunteer Experience Highlight: Ezaz Hasnain, Hospice Volunteer



Being a hospice volunteer, I document patient visits, including changes in observable behavior, for the interdisciplinary group. In addition to this, I provide quality time and music therapy by playing songs on the violin for patients. After sharing conversation and watching movies with them, I would ask patients if there is a specific song they would like to hear on the violin. I practiced their song of choice on my own time so that I have it ready for my next visit with them. Seeing my patients' faces light up

when they hear me play a song that took them back to their childhood has given me more than enough confirmation that I want to make the same impact on patients as a physician. This patient experience helped me understand that while science and research are vital in medicine, making connections with patients is just as critical for healing. Keeping this in mind as I applied to medical schools and was eventually accepted, I want to continue to practice my empathy and listening skills that I have gained by being a hospice volunteer as a medical student. This is part of my commitment to lifelong learning.



Awareness Dates to Remember

Arthritis Awareness Month

Hepatitis Awareness Month

Lupus Awareness Month

Mental health Month

National High Blood Pressure Education Month

Skin Cancer Prevention Month

National Stroke Awareness Month

National hospital Week | May 2-8

National Nurses Week | May 6-12

National Woman's Health Week | May 9-15

World Asthma Day | May 4

Military Spouse Appreciation Month

We recognize May 6th as Military Spouse Appreciation Day. A day in which we honor the sacrifices made by military spouses. Their endless loyalty and commitment to supporting our troops as they serve our country deserves just as much recognition as our troops.

Silverado recognizes our hospice team Spiritual Counselor, Gerardo Camarena's wife, Rory for all they have given to our country. We thank her and all military spouses for giving up time with their loved ones so our Patriots can preserve the safety of our nation.



Volunteer Program Highlight: Memory Bear

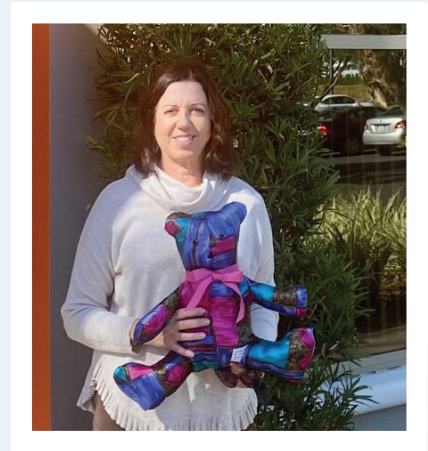
Silverado volunteers are a tremendous support to patients, families and care team. Over time they become a trusting friend that serves along side the care team caring for the family and individual nearing the end of life. Volunteers have a multitude of skills and talents that are shared during face-to-face visits, in the office or behind the scenes from home.

Silverado Hospice offers a program that transforms cozy items such as clothes or blankets into a one of a kind Memory Bear stuffed animal. The volunteer is given the tools needed to create the bear along with the articles of clothing. This project is coordinated through your Silverado Hospice Volunteer Manager.

Projects requirements:

- Patient must have been under the care of Silverado Hospice
- 1-3 articles of clothing (cotton, flannel, khaki and tight knits) shirts, dresses or pajamas. **Volunteers cannot work with leather, beaded garments or stretch knits.*

Please allow 4-6 weeks for volunteer to complete bear.



CONTACT US

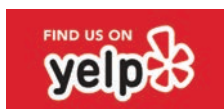
24-hour line: (888) 328-5660

Fax: (949) 653-0452

Referral line: (800) 507-9726

Volunteer inquiries: (888) 328-5660

Visit us online with our 24/7 Live Chat Line: [silveradohospice.com](https://www.silveradohospice.com)



If you would like to leave one of your favorite team members a praise, you may do so on our Yelp page. Search **Silverado Hospice Orange County**