

Silverado Hospice Los Angeles

Silverado Hospice Newsletter

Author: Juliet Laschiazza

NATIONAL SOCIAL WORK MONTH!

March is National Social Work Month, which celebrates the positive contributions of social workers across the country. Social work became a recognized profession in the United States in 1898, a response to growing social issues throughout the century. Many activists dedicated themselves to addressing injustices like poverty and mental illness, which helped shape laws and establish services for vulnerable populations.

Today, social workers are present in a wide range of settings, assisting individuals and families in achieving overall well-being. Common environments where social workers work include hospitals, government welfare departments, mental health institutions, hospices, and more. They take on challenging tasks with empathy and serve as invaluable resources for their colleagues.

In hospice, social workers bring a sense of calm during an incredibly critical time. They build strong relationships with both the patient and the family to advocate for the best possible care plan. Social workers also connect families with essential resources and help them prepare for the hospice journey, even providing follow-up support after the patient's passing. A day in the life of a social worker is never the same, but it is always rewarding. The social workers at Silverado work tirelessly to ensure that both you and your family are as comfortable as possible.

Thank you Silverado Social Workers!

IN THIS ISSUE

Conversations to have with your hospice team - 2
Thanks to our Social Workers & Interns - 3,4,5
Spotlight on! - 6 & 7

STAY CONNECTED

(818) 848-4048
(888) 328-6622



Visit us on the Web

[Los Angeles Hospice](#)
[Silverado Hospice](#)



Like us on
Facebook!



Review us
on Yelp!



WE ♥ OUR

Social Workers

THANK YOU TO OUR PASSIONATE
AND DEDICATED STAFF WHO
SUPPORT OUR PATIENTS AND
FAMILIES

MORE ON SOCIAL WORK

Myths about Social Workers

✗ They like to meddle in other people's lives

Social workers are present to be an advocate for you and your family. They work in your best interest to resolve issues and enhance well-being.

✗ Anyone can do what social workers do.

Social workers are highly skilled professionals who hold at least a bachelor's degree in social work. A social worker in hospice has professional and emotional preparedness to provide care in the field.

✗ Mental health services require a psychologist.

Social workers are well equipped with mental health training and can provide these services. In rural areas, social workers are the only mental health providers.

Fun Facts About Social Workers

A social worker does not have a typical 8-hour workday. ✓

The social worker meets with their clients, makes difficult decisions, and finds resources for them. They may need to work longer than 8 hours a day to meet the client's needs

Social Worker in hospice is not always depressing. ✓

Death and dying are not easy topics to discuss, and many people believe hospice social work is always sad. Social workers in hospice see the good in people during a critical time and see their work affecting their clients in a positive way

There are male social workers too! ✓

Social work is often referred to as a woman-dominated field. However, males do become social workers, and it is encouraged that more men join the profession.

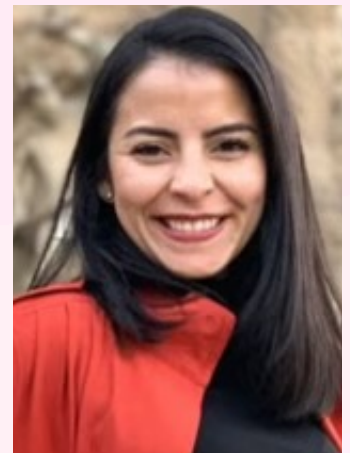
A Special Thanks to our Silverado Social Workers!



Karina D'Antin, MSW: I became a social worker because of my grandfather, whose resilience and work ethic as an immigrant shaped my values. When he was diagnosed with lung cancer at the start of my master's program, I was deeply moved by his experience and the challenges that come with end-of-life care. His journey inspired me to dedicate my career to supporting individuals and families during this difficult stage, ensuring they receive the compassion, dignity, and guidance they deserve. Through my work, I honor his legacy and continue learning about the profound experiences people face at the end of life.

Outside of work, I cherish spending time with my husband, son and dog, going on hikes, and making memories at Disneyland. These moments remind me of the importance of connection, joy, and being present—values that I bring into both my personal and professional life.

Zitlaly Cristerna Soto, MSW: Has been a part of the Silverado team since 2016. Some of you might know her as 'Laly.' She has been practicing in the field of social work for almost 10 years. Laly earned her Master's in social work with an emphasis on Gerontology. She believes her passion for working with the elderly stemmed from volunteering in nursing homes as a teenager. Laly's love of social work developed when she served for AmeriCorps. She is wholeheartedly dedicated to the philosophy of hospice and wishes it was incorporated in other countries. Laly dedicates her work to her late grandmother, who lived in Mexico, whom she believes would have found hospice care to be a great blessing.





Karla Andino Sosa, MA, MSW: In 2017 I earned my degree in Forensic Social Work from the University of Puerto Rico; and I have been a social worker in California for 6 years. For over 3 years I was a social worker for foster children, where I learned the amazing job, you can do for the most in need. Back in April 2023 I joined Silverado to continue learning and providing care for the most vulnerable, now in the hospice community.

Nikao Chalmers, SW: Graduated from Clark Atlanta University Whitney M. Young School of Social Work in 2008. Nikao began her Social Work Profession working for Department of Family and Children Services in 2008. Nikao worked in different capacities in the field of Social work including School-Base Programs, Community Mental, and working in STRTP (Group Homes). Nikao joined Silverado in 2023 and enjoys the team she works with and is open to learning new things. Nikao is compassionate to the families she encounters.



Kimberly Ramos, ACSW: I graduated from California State University, Los Angeles in 2017 with my bachelor's in social work and I obtained my master's in social work at USC during the pandemic. At a young age I found myself helping others. I learned how to advocate for others and became resourceful. My experience is primarily working with at-risk youth, but I also have experience working with Family preservation through the Resources Family Approval program, and experience working with adults who have dual diagnosis. I joined Hospice to help the vulnerable population and assist families during a difficult time.

A Special Thanks to our Amazing Social Worker Interns!

Kristin VanSteemburg, University of Massachusetts: Silverado's ethos and excellent staff set the gold standard of what it means to age with dignity, compassion, and comfort. My interest in hospice and palliative work was sparked while working on suicide prevention counselor on the 988 Lifeline. I would get many calls from seniors and people who were terminally ill but were not suicidal. They would call due to feeling frustrated that they couldn't talk about death and dying with their friends and loved ones. I would also speak with people in other assisted living residences who were feeling lonely and irritated that caregivers would speak to them as if they were children. In a sea of hospice and palliative companies, Silverado stands out for quality of care. I am proud to be a part of a team of empathetic professionals who are truly passionate about hospice and palliative work. The time I spend with clients has been incredibly rewarding, and I'm honored to have so many of them share their stories with me.



Mia Stenger, University of Denver: I was drawn to social work as a profession because it is all about connection, relationships, and understanding environments. The way we live now is busier and more isolated than ever, and the tenets of social work (social justice, empowering people and communities, therapy & counseling, and more) help remedy that. I'm really excited to start my internship at Silverado so that I can learn from everyone (staff and patients alike) and their experiences and find how I can contribute to the hospice community.

SOCIAL WORKER

**A kind, supportive and loving individual who cares deeply for the wellbeing of others.
A true modern day superhero always going beyond the call of duty to help others in need.**

Spotlight On!

We would love to highlight some of our Team Members!



Silverado Hospice LA 2024 Associate of the Year!

Congratulations to our dear Ugo, LVN! We are so grateful for his engagement, support, and unwavering dedication to our Silverado Hospice LA patients and families. He exemplifies the motto 'Love is greater than fear' by consistently delivering high-quality care during the most challenging times. Our appreciation for him goes beyond words. Thank you, Ugo—you truly deserve this honor!



At Silverado, we love to celebrate growth and achievements!

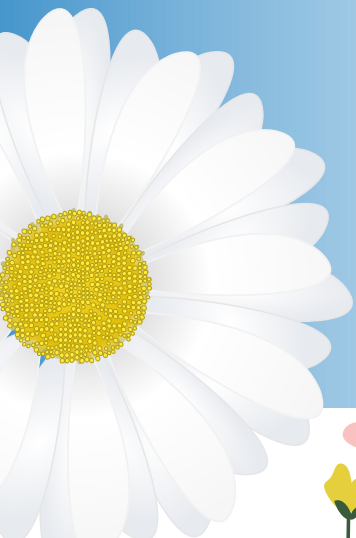


We are thrilled to congratulate Mario Sunday, who officially passed the NCLEX and is now a Registered Nurse!

Mario has been part of the Silverado family since 2020, working the challenging NOC shift, where he consistently goes above and beyond for our patients and families.

Let's give him a round of applause for this incredible accomplishment — congratulations on becoming an RN, Mario! 🎉👏

CONGRATS



Spotlight On!

Meet our wonderful employee who was recognized as employee of the month in March!

Meet Erika, RN Case Manager



Erika was selected by her peers through voting. Her peers said things like “She is very much appreciated for her thoroughness, flexibility, and over all, she's just the nicest person.”

Let us know
how we're
doing!

Leave us a review,
click the icons to
get started!

Like us on
Facebook!

Review us
on Yelp



Silverado Hospice
Los Angeles

“Families and
patients love her.
She always has a
smile on her face
and steps in when
we need her.”



Meet Athena,
RN Case Manager