

Silverado Hospice Los Angeles

Silverado Hospice Newsletter

Author: Juliet Laschiazza

March is National Social Work Month

A time to recognize and celebrate the meaningful contributions social workers make in communities across the country. Social work became a recognized profession in the United States in 1898 in response to growing social challenges during that time. Many advocates and activists dedicated themselves to addressing injustices such as poverty and mental illness, helping shape important laws and establish services for vulnerable populations.

Today, social workers serve in a wide variety of settings, supporting individuals and families in achieving overall well-being. You can find social workers in hospitals, government agencies, mental health facilities, hospices, and many other environments. Through compassion, advocacy, and expertise, they take on complex challenges while serving as invaluable resources for both patients and their colleagues.

In hospice care, social workers play a particularly meaningful role. They bring a sense of calm and support during an incredibly sensitive time, building strong relationships with patients and their families to ensure the best possible care plan. Social workers also connect families with important resources, guide them through the hospice journey, and often continue to provide support even after a loved one has passed.

No two days are the same in the life of a social worker, but the work is always meaningful. At Silverado, our social workers work tirelessly to ensure that both patients and their families feel supported, informed, and as comfortable as possible.



THANK YOU SOCIAL WORKERS!

IN THIS ISSUE

Meet our AMAZING Social Workers and Intern - 2, 3, 4
Spotlight on! - 5

STAY CONNECTED

(818) 848-4048
(888) 328-6622



Visit us on the Web

[Los Angeles Hospice](#)
[Silverado Hospice](#)



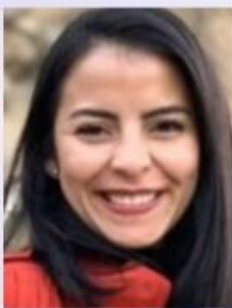
[Like us on Facebook!](#)

[Review us on Google!](#)



What Inspired Our Social Workers to Work in Hospice

Karina D'Antin, MSW: I became a social worker because of my grandfather, whose resilience and work ethic as an immigrant shaped my values. When he was diagnosed with lung cancer at the start of my master's program, I was deeply moved by his experience and the challenges that come with end-of-life care. His journey inspired me to dedicate my career to supporting individuals and families during this difficult stage, ensuring they receive the compassion, dignity, and guidance they deserve. Through my work, I honor his legacy and continue learning about the profound experiences people face at the end of life. Outside of work, I cherish spending time with my husband, son and dog, going on hikes, and making memories at Disneyland. These moments remind me of the importance of connection, joy, and being present—values that I bring into both my personal and professional life.



Zitlaly Cristerna Soto, MSW: Has been a part of the Silverado team since 2016. Some of you might know her as 'Laly.' She has been practicing in the field of social work for almost 10 years. Laly earned her Master's in social work with an emphasis on Gerontology. She believes her passion for working with the elderly stemmed from volunteering in nursing homes as a teenager. Laly's love of social work developed when she served for AmeriCorps. She is wholeheartedly dedicated to the philosophy of hospice and wishes it was incorporated in other countries. Laly dedicates her work to her late grandmother, who lived in Mexico, whom she believes would have found hospice care to be a great blessing.



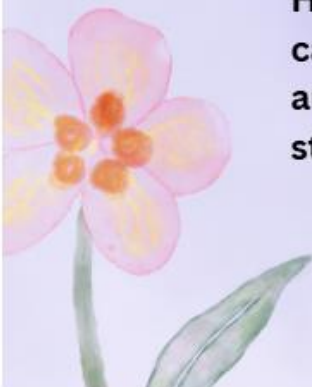
Kimberly Ramos, ACSW: I graduated from California State University, Los Angeles in 2017 with my bachelor's in social work and I obtained my master's in social work at USC during the pandemic. At a young age I found myself helping others. I learned how to advocate for others and became resourceful. My experience is primarily working with at-risk youth, but I also have experience working with Family preservation through the Resources Family Approval program, and experience working with adults who have dual diagnosis. I joined Hospice to help the vulnerable population and assist families during a difficult time.



Llyade Susan Elliott, MSW: After many years in the field, the simplest way to describe why I became a hospice social worker is that I truly love this work. Being present with patients and families at the end of life and providing comfort, support, and calm during such an important time is incredibly meaningful.

I have been an MSW for over 29 years, previously working in foster care and adoption where I supported families through challenging life moments. More recently, experiencing the loss of both of my parents, my mother just five months ago, has deepened my understanding of the grief families face and strengthened my connection to this work.

Hospice social workers bring compassion, grace, and a calming presence to patients and their loved ones. It is truly an honor to walk alongside families during such a profound stage of life.





Karla Andino Sosa, MA, MSW: In 2017 I earned my degree in Forensic Social Work from the University of Puerto Rico; and I have been a social worker in California for 6 years. For over 3 years I was a social worker for foster children, where I learned the amazing job, you can do for the most in need. Back in April 2023 I joined Silverado to continue learning and providing care for the most vulnerable, now in the hospice community.

“Dying Is Not A Medical Event.
It Is A Social, Emotional Event.
Just Because We Can’t Heal The Physical Body
Doesn’t Mean There Isn’t Healing To Be Done.
Enter Social Workers.
Your Skills Are An Important Part Of The Dying
Experience.
End Of Life Needs Your Healing Guidance.
We Honor You.”



-Cecily Saunders



What Inspired Our Social Work Intern to Pursue Social Work

Alexandria (Alex) Ortiz, Social Worker Intern: I am a MSW Intern and enrolled at Cal State Los Angeles. I wanted to work with the hospice population because I have had family members who have received hospice services. I was thankful to the hospice team that took care of my grandpa and my cousin. I wanted to be able to provide that same sense of support and comfort to patients and their loved ones who are also on their hospice journey. I have been enjoying my time learning and interning at Silverado. For self-care I enjoy gardening, cooking, baking, and building Legos.



Ellada Kravchenko, Social Worker Intern: I am currently an MSW intern with Silverado Hospice. I have worked in healthcare since 2008, including roles with Providence, Keck Medical Center, and currently Cedars-Sinai. I earned my Bachelor's degree in Psychology with an emphasis in Management in 2017.

While I was previously pursuing a BSN, a personal health scare during my Med-Surg coursework changed my perspective. After experiencing a misdiagnosis and having to advocate for my own care, I realized my true passion was social work so I can support and advocate for patients and families navigating the healthcare system.

As a mother of two, helping others is more than a career—it's a calling. I am grateful to be part of the Silverado Hospice team and to continue growing in a field that allows me to serve patients and families with compassion and advocacy.

Spotlight On!

Meet our wonderful employee who was recognized as employee of the month in **MARCH!**



Meet Kimberly, Social Worker

Kimberly was selected by her peers through voting. Her peers said things like “Kimberly is a true team player who consistently goes above and beyond her role. Most importantly, Kimberly genuinely cares about our patients and families and is truly a joy to work with.”

Let us know how we're doing!

Leave us a review,
click the icons to
get started!

[Like us on
Facebook!](#)



[Review us
on
Google!](#)



[Silverado Hospice](#)
[Los Angeles](#)

Your feedback is important to us. If you have a concern, please contact our Administrator, Ulysess Plummer, at (888) 328-6622